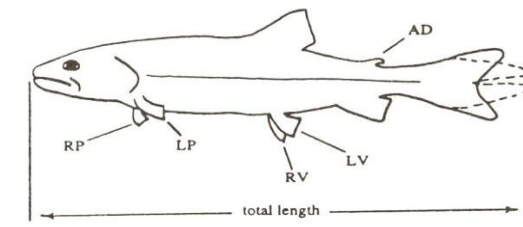


## Weslemkoon Lake Trout – Annual Production Records, NHC FH 2007- 2013

### Stocking Destinations and Life Stage Stocked

Date: Eggs In	# Eggs Collected	Date: Stocked	# Stocked	Hatchery Production % Survival	Provincial Fin Clip (life stage stocked)		Holland	Jamieson	Lake St. Peter	L'Amable	Lavallee	McAuley	Purdy	Paudash
					Y &SA	FFg								
2007		2009	3100		LV		400	600		2100				
2008	15000	2009	4400		LP				2800				1600	
		2010	5758	67.7	LP		400	658		2100	1200	1400		
2009	13700	2010	4400		RP				2800				1600	
		2011	5760	74.2	RP		460	600		2100	1200	1400		
2010	14150	2011	4400		RV				2800				1600	
		2012	5765	71.8	RV		465	600		2100	1200	1400		
2011	12170	2012	4400		AD				2800				1600	
		2013	6180	86.9	AD		375	560	875	2300	1015	1055		
2012	4922	2013			---		---	---	---	---	---	---	---	
		2014	3255	66.1	LV				1105**		1060	905		185
<b>Totals</b>	<b>59942</b>		<b>47418</b>	<b>73.3</b>			<b>2100</b>	<b>3018</b>	<b>12075</b>	<b>10700</b>	<b>5675</b>	<b>6160</b>	<b>6400</b>	<b>185</b>

- **Developmental Stage of Fish** - The life stage of the fish at the time of stocking: FFg, Fall fingerlings (9-11 months); Y, Yearlings (15-17 months); SA, Sub-adults (> 20 months but immature),
- **(#)\*\*** - for Lake St. Peter and Paudash Lakes in 2014, stocked only YEARLINGS.



FIN CLIPS: AD = adipose LV = left ventral RV = right ventral  
LP = left pectoral RP = right pectoral NC = no clip